



Company Profile

SARANA STEEL ENGINEERING

Dedicated To Serve Better

LIST OF CONTENTS

- Company Overview
- Our Portfolio
- Facility and Technology
- Quality Objectives
- Business Strategy.....
- Major Milestone
- Project – Factory And Warehouse
- Project – Hotel and Apartment
- Project – Civil Works
- Project – Tank
- Project – Others
- Certificate And Permits

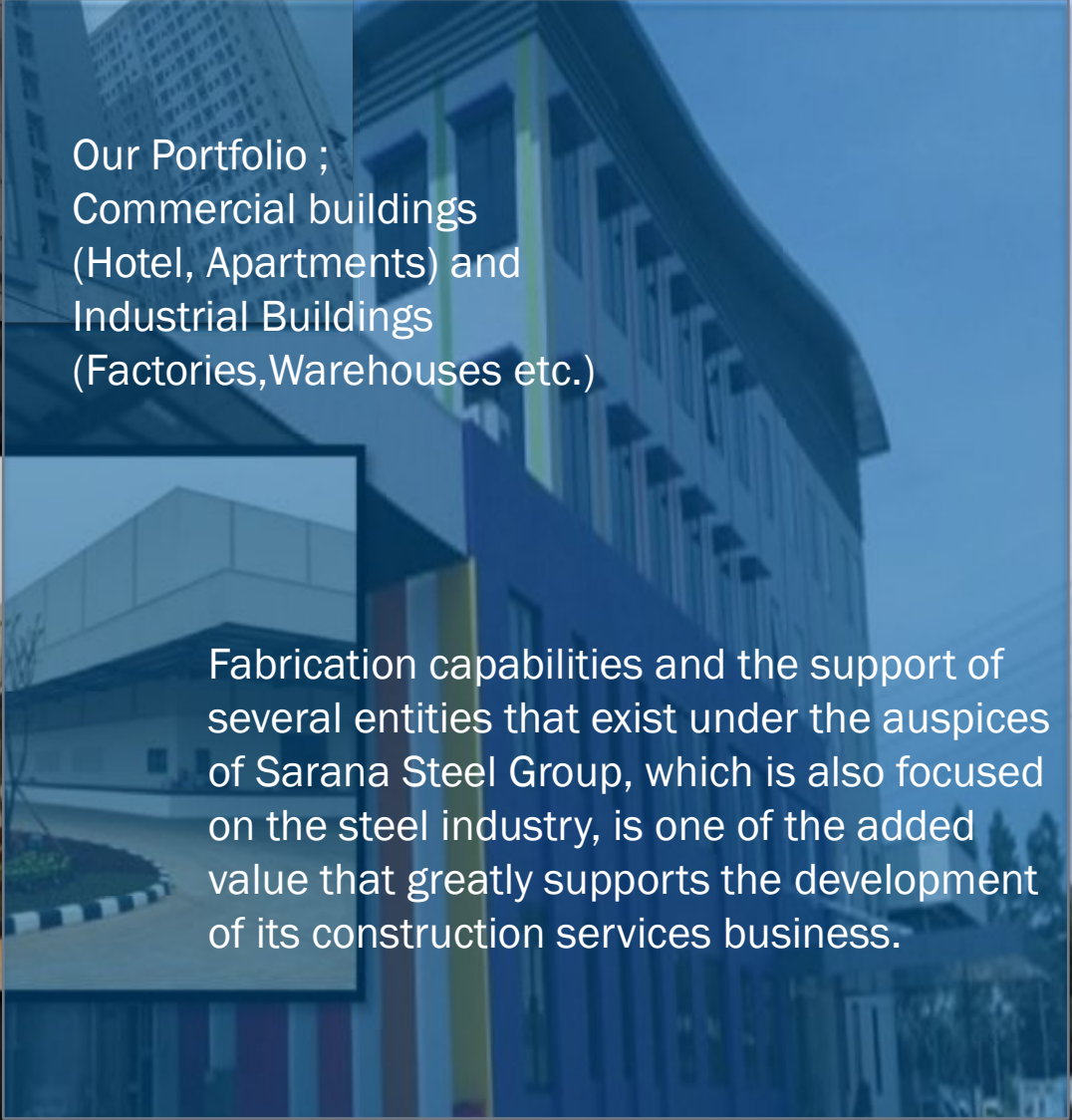


COMPANY OVERVIEW

PT Sarana Steel Engineering (SSE) is a company engaged in Construction, Fabrication and Mechanical which was established in 2004. This Company is one of the business entities of Sarana Steel Group.



Our Portfolio ;
Commercial buildings
(Hotel, Apartments) and
Industrial Buildings
(Factories, Warehouses etc.)



Fabrication capabilities and the support of several entities that exist under the auspices of Sarana Steel Group, which is also focused on the steel industry, is one of the added value that greatly supports the development of its construction services business.



Facility dan Technology

PT Sarana Steel Engineering 2 workshop Locations



Workshop Pulogadung

Jl. Pulokambing II No 11
Kawasan Industri Pulogadung
Jakarta Timur



Facility dan Technology

Workshop Karawang

Pergudangan
Kawasan Sentra Bizhub
Jalan Teluk Jambe
Karawang Barat



Facility dan Technology

QHSE Team

Sarana Steel Engineering is fully committed to developing and maintaining a strong positive HSE culture in every project, where all individuals are aware of the Quality, Health, Safety and Environmental impacts of their work activities and take appropriate corrective actions to minimize risks.

As a national-scale company that upholds the quality of work and has received ISO 9001:2015 certification, the quality control process is an important thing that is always put forward.



Engineering And Software

Our engineers use software to select materials, processes, dimensions and tolerances. The designs drawn can be 2-dimensional or 3-dimensional and can be viewed from various points of view.

SSE engineers are able to improve design quality, productivity, and improve communication between designers and their readers

QUALITY OBJECTIVES

We are committed to always producing and delivering quality products or services according to the wishes of all customers.

The Quality Policy will continue to be communicated through socialization and posters.

VISION

To be the best construction, fabrication, and mechanical service company in Indonesia that's professional, strong, advanced and reliable, supported by human resources with character, noble morals and skilled experts ;
by prioritizing effective, efficient and qualified work process (QCD)

MISSION

To become one of the national companies that provide services with high quality result, covering both technical and cost aspects, in order to earn profit for the growth of the company so as to provide added value for employees, shareholders and customers.

Guarantee of Raw Material Availability

As part of large group that has been in the industry for more than 40 years, SSE is fully supported by availability material, especially from PT. Sarana Steel, PT. Sarana Central Bajatama also from PT Steel Pipe Industry of Indonesia (SPINDO).



Strong Financial Capacity

As part of large group, strong financial support is a key factor for company.

Business Strategy

Knowledge and Experience

The experience and knowledge gained from large-scale projects that's so far have been proven to be well resolved and right on time.

Quality Concern

We always concern about Quality because we are respectable Design & build contractor in Indonesia.

Major Milestone

2017

Trusted to Design & Build High Rise Building for Ibis Style Hotel and Grand Icon Apartment

2011 – 2014

Trusted to Construct many Large scale Project. Kamadjaja Logistic, PT. SPINDO.TBK, PT.Propan Dekorindo Raya, Commarindo Pratama Warehouse, etc

2010

Trusted to Design & Build for Sarana Steel Factory including Continuous Coloring Machine (CCLM)

2007

Our Company Was Growing and expand business into General Contractor & Steel Structure Company

2004

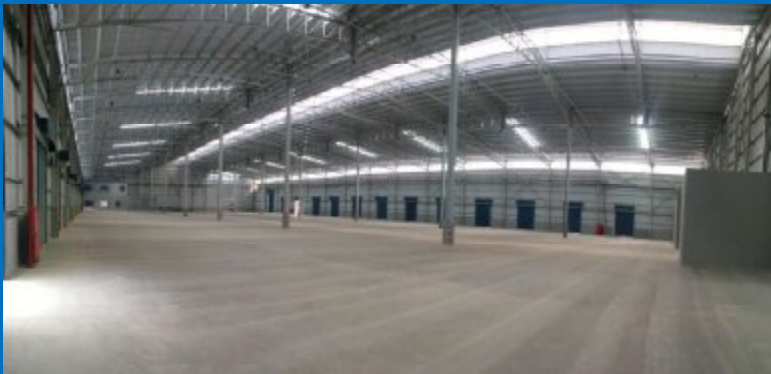
We start Manufacturer of Heavy equipment and Mechanical/Engineering Works such as Low Pressure Tanks/Vessels, Crane Structures, Storage Tanks, ETC



PROJECT
PORTFOLIO

Factories & Warehouse Project

Warehouse Unilever, Genesis - Manado



Location : Bitung ,
Manado
Site Area : 27.000 sqm
Building : 10.125 sqm
Scope of Work :
Struktur, Arsitektur, MEP



Paint Factory PT. Propan Raya ICC Tangerang



Location : Tangerang
Building : 8.920 sqm, etc
Scope of work :
Struktur, Arsitektur, MEP

Factory C5 – PT. Muliaglass Float Division -Cikarang



Location : Cikarang
Building : 4.100 sqm, etc
Scope of Work :
Fabrikasi, Painting, Erection



CHIMNEY – PT. Mulia Glass Float Division -Cikarang



Location : Cikarang
Building : 4.100 sqm, etc
Scope of Work :
Fabrikasi, Painting, Erection



Cold Storage For Crab Plant - Cirebon



Location : Cirebon
Building : 4.100 sqm,
etc
Scope Of Work :
Struktur, Arsitektur, MEP

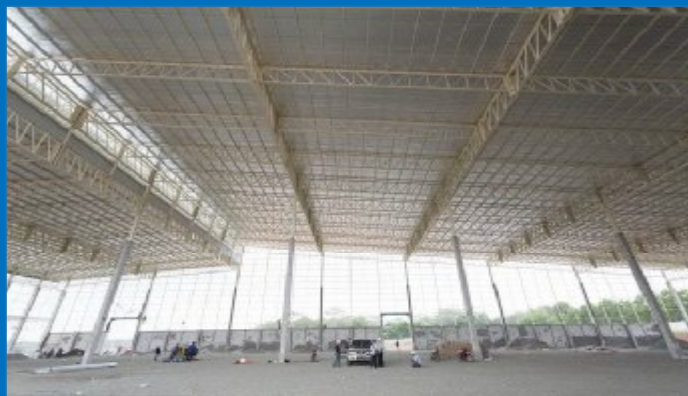


Warehouse

PT. Commarindo Pratama - Subang



Location : Subang
Building : 6.300 sqm
Scope of work : Struktur, Arsitektur



Warehouse KLOG Cibitung – Bekasi.



Location : Cibitung- Bekasi
Building : 30.000 sqm
Year : 2014



SPINDO Factory



Location : Karawang
Building : sqm
Year : 2014
Scope of work :
Struktur, Fabrikasi, Arsitektur,
Infrastruktur, MEP



A modern interior hallway with bright yellow walls and a large window. The ceiling features a recessed rectangular light fixture and a circular spotlight. On the right, a long, low wooden console table with a black metal frame holds a small vase of dried grass. A large, illuminated, white, stylized '8' or infinity symbol is mounted on the yellow wall above the console. The floor is a light yellow color. In the background, a large window with a white frame looks out onto a green landscape under a blue sky. A set of stairs with yellow steps and black nosing leads down from the hallway.

PROJECT PORTFOLIO

Hotel And Apartment Project

Ibis Style Hotel – Jatibening, Bekasi



Location : Jatibening -
Bekasi
Building : 12.500 sqm,
Floor : 17 floors





Hotel Akshaya

Kawasan Sentra
Bizhub,
Karawang
Barat



PROJECT PORTFOLIO



Civil Works

Pekerjaan Jalan & Infrastruktur Warehouse Unilever



Location : Bitung - Manado
Year : 2018
Scope of Work :
Infrastruktur, MEP

Pekerjaan Akses Jalan & Lantai Produksi PT. Propan Raya ICC



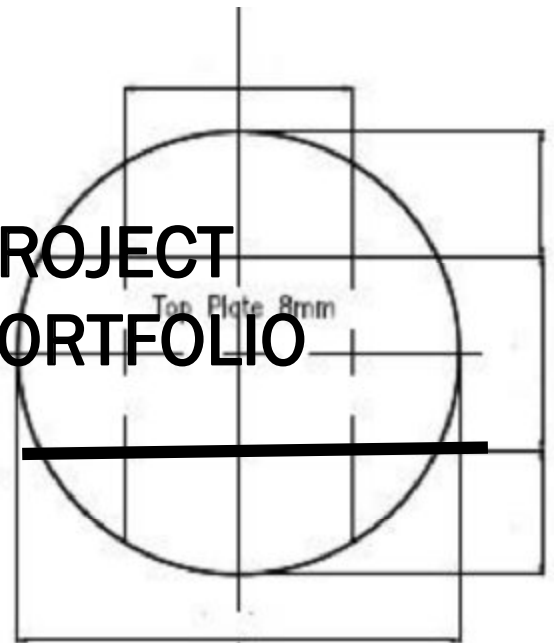
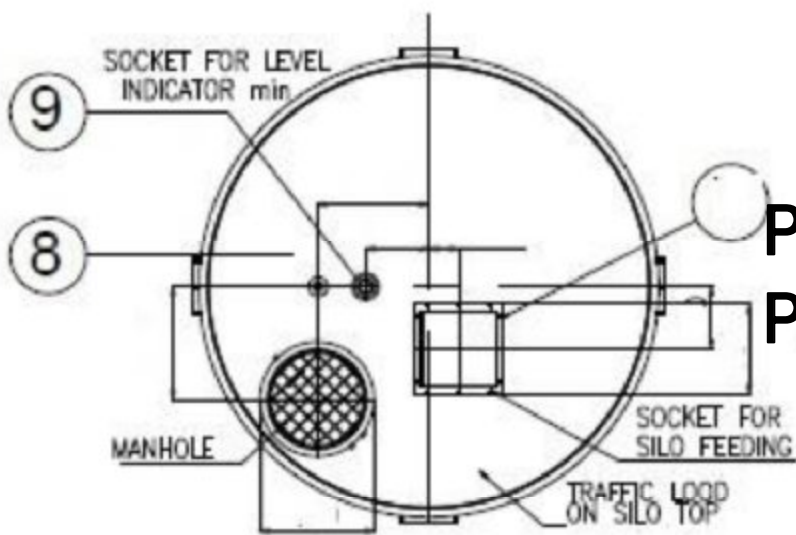
Location : Tangerang
Year : 2015
Scope of Work : Infrastructur
- MEP

Mezzanine Works – PT. Daiho Indonesia

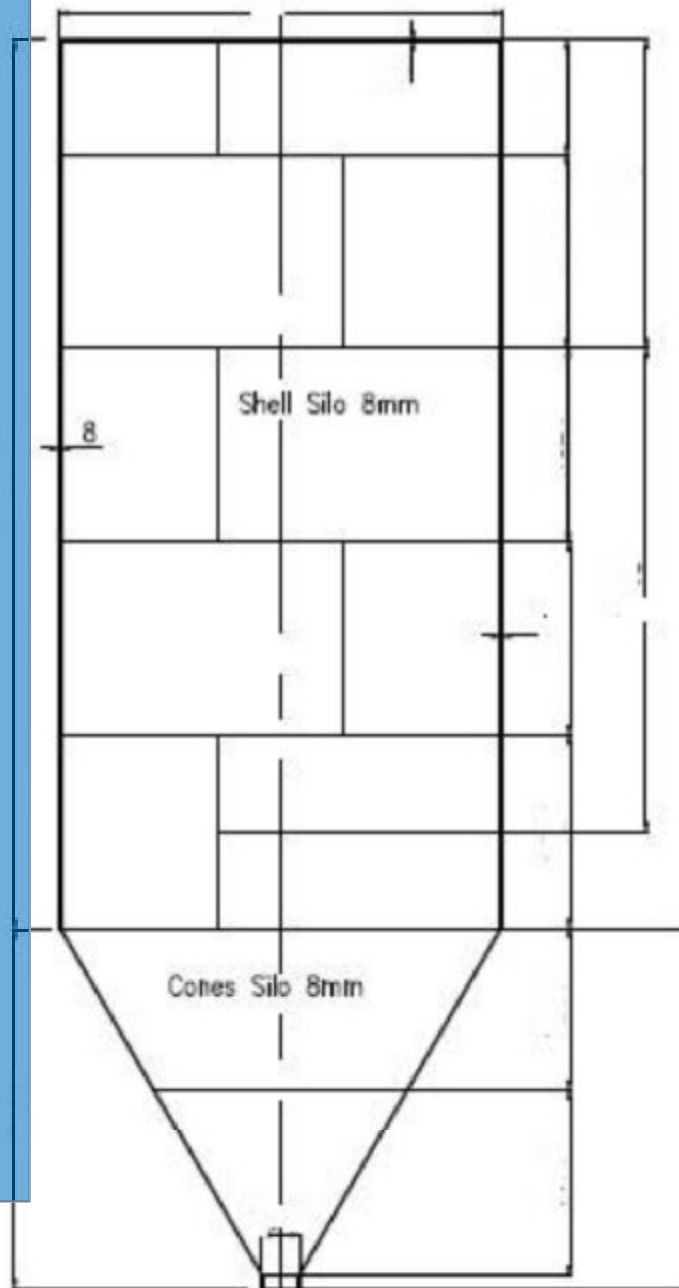
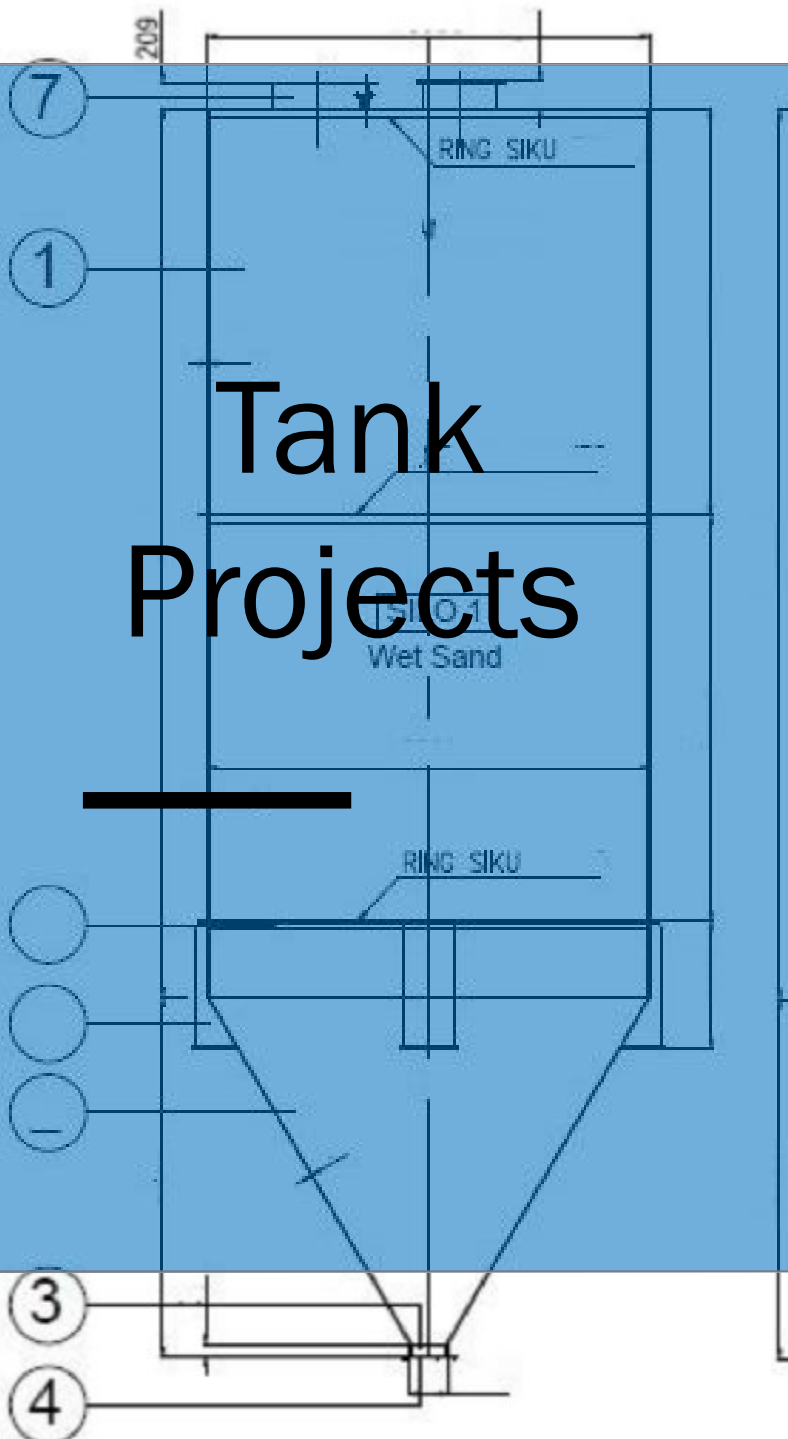


Location : GILC - Cikarang
Year : 2019
Scope of Work :
Struktur, Arsitektur, MEP

PROJECT PORTFOLIO



Tank Projects



Transformer Tank



Transformer Tank



Transformer Tank

Transformer Tank



Tangki Sterilizer & Pondasi Tangki



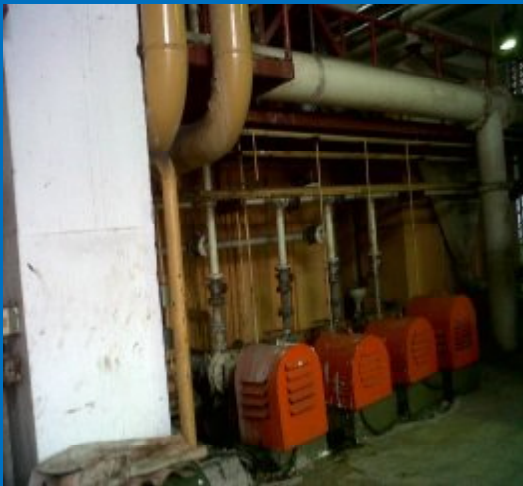
Location : Kalimantan
Year : 2017
Scope of Work :
Material, Fabrikasi, Painting, Erection

Acid Tank– PT. Indo Bharat Rayon

Location : Purwakarta – Jawa Barat
Year : 2009
Scope of Work :
Material, Fabrikasi, Painting, Erection



Pulper Tank – PT. Indo Bharat Rayon



Location : Purwakarta – Jawa Barat
Year : 2011
Scope of Work :
Material, Fabrikasi, Painting, Erection

SILO Tank – PT. Culletprima Setia



Location :
Tangerang – Banten
Year : 2021
Scope of Work :
Material, Fabrikasi,
Painting, Erection



Square Tank – PT. Bj Services Indonesia

Location : Jakarta
Year : 2011
Scope of Work :
Material, Fabrikasi, Painting, Erection



The background is a technical drawing, likely a mechanical or structural blueprint, featuring various lines, dimensions, and annotations. A semi-transparent blue rectangle is overlaid on the left side of the image, containing the text 'Others Projects' and a horizontal line.

Others Projects

Citraland Cibubur – ICON Steel Structure



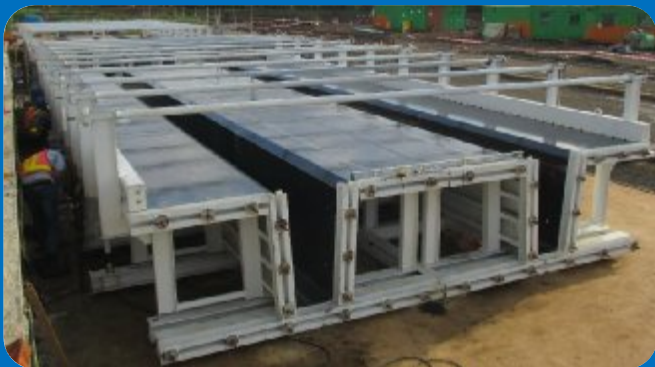
Location : Cibubur -
Cileungsi
Year : 2017
Scope of Work :
Design, Fabrikasi, Painting ,
Erection



Formwork Double Tie Beam - PLTU Tanjung Jati PT. BAM DECORIENT



Location : Jepara – Jawa tengah
Year : 2017
Scope of Work :
Material, Fabrikasi, Painting, Erection



Formwork Headstock – PLTU Tanjung Jati PT. BAM DECORIENT



Location : Jepara – Jawa tengah
Year : 2017
Scope of Work :
Material, Fabrikasi, Painting, Erection

Continues Color Line Machine (CCLM) PT. Sarana Central Bajatama Tbk



Location : Karawang – Jawa Barat
Year : 2012
Scope of Work :
Material, Fabrikasi, Painting, Erection





PERMITS

1. Certificate of Approval The Quality Management System Certificate 2022 ISO 9001. Certificate No: QM 3742
2. Certificate of Environmental Management System ISO 14001 Certificate 2022. Certificate No: 22-14001/E/06080
3. Certificate of Occupational Health and Safety Management System ISO 45001 Certificate 2022. Certificate No: 22-45001/OH/06079
4. Certificate of SMK3 No. Reg.SMK3.2020.MSR.SK-1352
5. NPWP 02.312.408.4-007.000
6. SIUP 07/1.824.51
7. SIUJK
1985/C.31/31.75/1.785.56/2018
8. SBUJPK 0-31-06-170-1-09-909284
9. TDP 0904.D1.19873

SARANA STEEL ENGINEERING

Dedicated To Serve Better

HEAD OFFICE & FACTORY :

Kawasan Industri Pulo Gadung
Jl. Pulo Kambing II No.11 Jakarta 13930
Kel.Jatinegara, Kec.Cakung, Jakarta Timur
Tel : (62-21) 4682 6589 (Hunting)
Fax : (62-21) 4609679
Email : marketing@sse.co.id



www.sse.co.id

www.saranaengineering.com